

FDA(미국 식품의약품안정청) 인증

PL(생산물배상책임보험) 가입

CE(유럽회의) 인증

KFDA(식품의약품안정청) 인증

국제특허 등록

국내특허 등록

유럽 및 미주 수출계약체결

**MOOHAN**  
www.moohanfa.com

**MIRACLEN**  
www.miraclen.com

ACR Antlaging Lab Solution  
**ACRA Lab 2**  
www.acralab.com

**MESOWELL**  
www.mesowell.com

www.moohanfa.com

**Tubex**  
Super PRP Tube System

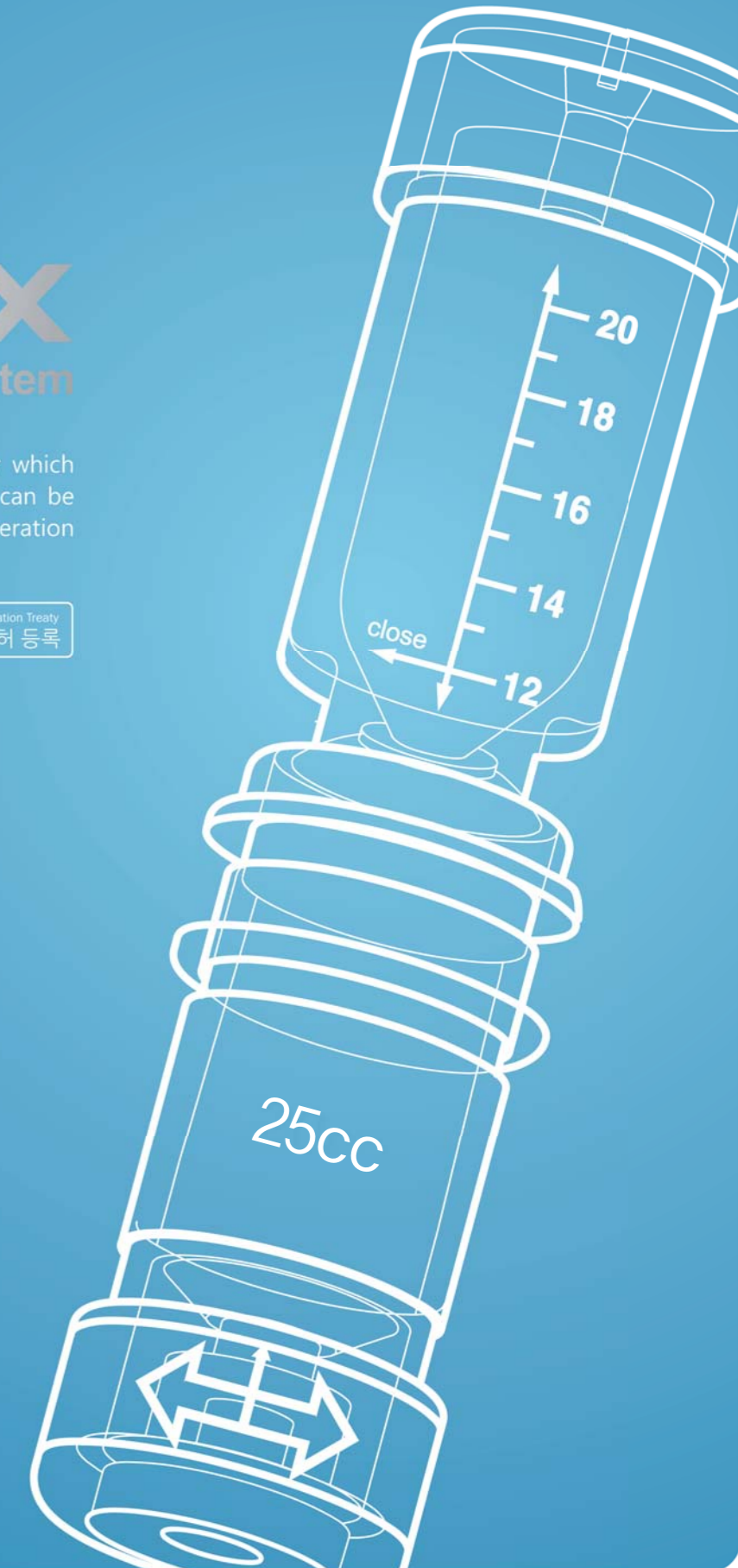
www.superprp.com

**MOOHAN**

605-1 Jiwol-ri, Chowol-eup, Gwangju-si, Gyeonggi-do, 464-863 Korea.  
Tel (82-31)769-8811, Fax (82-31)798-8817  
mh@moohanfa.com  
[ 사내교육용 ]

**Tubex**  
Super PRP Tube System

TUBEX is a blood collection container which can extract PRP(Platelet Rich Plasma), can be used for Pain treatment and Cell regeneration treatment.



# Tubex<sup>®</sup> Super PRP Tube System

[ For Tubex 25cc ]



## What's TUBEX?

TUBEX is a blood collection container which can extract PRP(Platelet Rich Plasma), can be used for Pain treatment and Cell regeneration treatment.

TUBEX는 PRP(Platelet rich plasma)추출을 위해 만들어진 PRP분리 전용키트로써 채혈 또는 수혈이 가능하며, 통증치료 및 세포재생 시술에 활용할 수 있습니다.

## Feature & Safe

It has been used medical plastic which has received Biocompatibility certification and After packing it has been sent for Gamma sterilization process followed by ISO11137. Using only one tube during the PRP extracting process, it can be prevented air con-tamination

생체적합성인증이 완료된 원자재를 사용하며, ISO11137에 따른 철저한 감마멸균시스템을 적용함으로써 완제품에 대한 안정성과 신뢰를 구축하였습니다. 또한 기존의 유사제품과 달리 1키트방식을 채택함으로써 농축 시 발생할 수 있는 공기오염을 원천적으로 차단하여 보다 안전한 시술을 약속합니다.

## Speed

It needs to have 2tubes for the traditional way of PRP extracting process, but using only one tubex it makes the process much more simple and easy to use.

2개의 튜브를 결합하여 1키트방식을 도입함으로써 PRP제조공정에 대한 피로감이 적고 시술속도가 빠릅니다.

## One Step

Selection and concentration



# Tubex<sup>®</sup> Super PRP Tube System

정부 산학협력기술개발사업 선정 개발품

경희대학교  
(주)무한기업  
중소기업청

GIPO

Patent NO.10-092\*\*\*\*

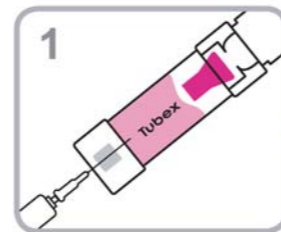
## Compatibility

It can be fitted for any Swing type centrifuge.

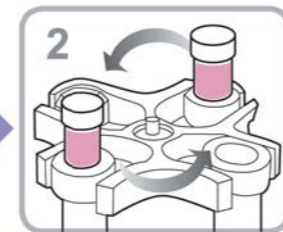
슬림한 디자인으로 스윙타입의 원심분리기라면 모델과 상관없이 호환이 가능합니다.

BLOOD AMOUNT	OUTER DIAMETER	LENGTH	LUSEABLE CENTRIFUGE
10 CC	21 mm	113mm	(21g)swing type
25 CC	30 mm	114mm	(50g)swing type

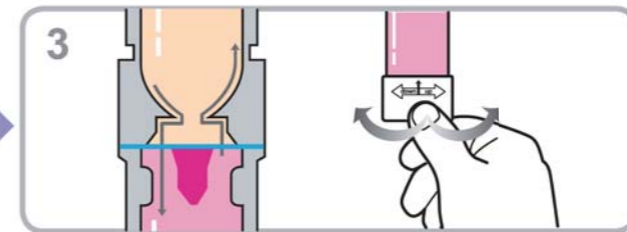
## How to use Tubex



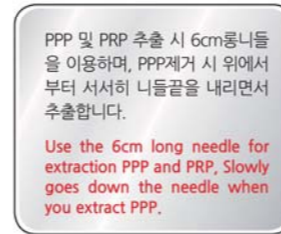
1 채혈된 혈액을 Tubex에 주입합니다.  
Inject blood into Tubex



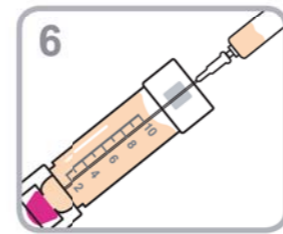
2 원심분리를 합니다. < 1차 분리 >  
Adjust RCF value and time for 1st centrifugal separation



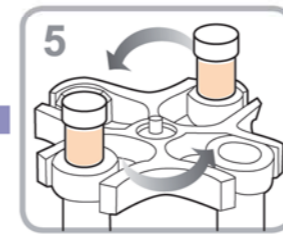
3 하단부 조절노브를 돌려 적혈구 상단을 청색선에 위치시킵니다.  
(오른쪽: 올림, 왼쪽: 내림)  
Turn the bottom cork to adjust red blood cell level to meet blue line  
(left : down, Right : up)



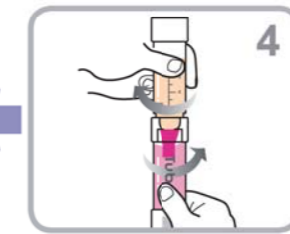
4 PPP 및 PRP 추출 시 6cm롱니들을 이용하여, PPP제거 시 위에서부터 서서히 니들끝을 내리면서 추출합니다.  
Use the 6cm long needle for extraction PPP and PRP. Slowly goes down the needle when you extract PPP.



5 2mm 위의 PPP를 추출하고 2mm 아래의 PRP를 추출 합니다.  
Extract PPP above 2mm first, and then extract PRP under 2mm



6 원심분리를 합니다. < 2차 농축 >  
Adjust RCF value and time for 2nd centrifugal concentration

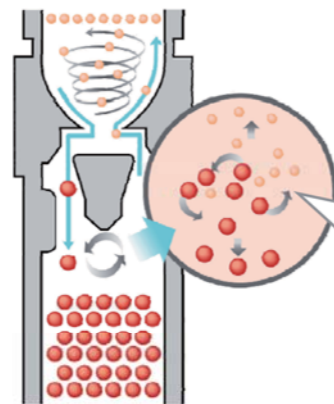


7 분리된 혈액이 섞이지 않도록 상부챔버와 하부챔버를 돌려 밸브를 잠그줍니다.  
Not to mix the red blood cell and plasma, lock the middle valve. (Hold the lower chamber and turn the upper chamber to the left side)

## What's VORTEX?

The Vortex engineering method is a unique process to minimize loss of platelet which is helping to separate red blood cell and platelet.

TUBEX안에 설계된 Vortex(소용돌이공법)라는 특별한 장치로 보다 풍부한 혈소판을 기대할 수 있습니다.



## Vortex Technology

Platelet rich plasma selection and concentration

20cc

FEATURE & FUNCTION

